

## **Mona Minas SA Buys Heavy Equipment!**

### **Tri-Phase Electric Installed at # 4395**

**MM Mona Minas S.A.**

**Mona Minas SA - 50th Street - Global Plaza Tower, 19th Floor, Suite H Panama City,  
Panama –**

Tel 00 1 574 203 0678 Tel 00 1 561 998 8631 Fax 00 1 561 2108938

**[www.MonaMinas.com](http://www.MonaMinas.com)**

**November 10<sup>th</sup> 2009**

**Updates from the Las Palmeras #4395 Gold and Silver Mine in Segovia Antioquia:**

**Segovia November 10<sup>th</sup> 2009**

**On November 1<sup>st</sup> work on the new tunnel to be dug at a 30° to 40° tunnel started. Wood was bought and workers were moved from the main tunnel to get the auxiliary tunnel built as soon as possible.**

**A winch has been bought and will be anchored on a cement base at the top of the shaft to allow the ore to be hauled to the top of the mine by rails and carts. This will allow the production to increase to a commercial level that will be needed to reap the gains from the mine.**

**Our analysis shows that this mine must produce 10 tons of ore daily on a minimum to be profitable and attractive to bigger players for acquisitions. With the cost of producing the ore at a mill around 30% of the production the company had to install tri-phase electric for its own processing plant for the future. The company has bought all the equipment pictured below and will be exporting a 185 CFM compressor to Colombia once a Customs Broker has been contracted. Capital will still be needed to get the company to the next level but we have accomplished a lot in less than one year.**



**WINCH ( Malacate)**



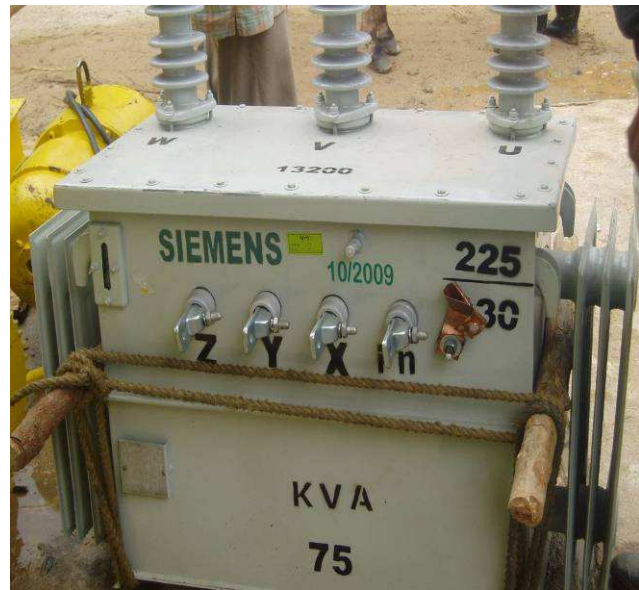
**HEAVY DUTY EXHAUST FAN ( Bufalo)**



**A wide angle view of the mine site Las Palmeras. The original shaft is on the left and the new inclined tunnel is being dug on the right side of the office building. Wood that will be need for the support beams is out front ready to be deployed. The company is running a double shift to get the mine into production as soon as possible at much higher tonnage than what is feasible now.**



The Electrical Siemens 75 KVA Transformer, wires and couplings along with the new refurbished winch are loaded on the truck for the trip to Mine Site in Segovia.



DAY ONE NOVEMBER 1<sup>ST</sup> 2009 THE CONSTRUCTION ON THE NEW INCLINED TUNNEL BEGINS



## GETTING THE MULE TEAM TO HAUL WOOD INTO THE MINE SITE



In less than one week the workers have made tremendous progress and are one third of the way down to the 35 meter depth the tunnel must reach.





Mine site director Hugo Ramirez inspecting the bottom of the shaft on November 5<sup>th</sup> 2009





