

**PICTURES OF THE INSTALLATION OF ELECTRIC INFRASTRUCTURE AT
MONA MINAS GOLD MINE LAS PALMERAS LICENSE #4395**

MARCH 4TH 2009



LABORERS CARRING THE ELECTRIC INSTALLATION EQUIPMENT IN FROM THE ROAD OVER HILLS





ON SITE MANAGER HUGO RAMIREZ HELPING THE CREW LIFT THE POLE





LABORERS LIFTING UPRIGHT THE 10 METER POLES AFTER CARRYING THE EQUIPMENT 600 TO 700 METERS INTO THE HILLS ON THEIR SHOULDERS.



WORKERS ARE ON TOP OF THE POLE WITHOUT ANY HEAVY EQUIPMENT.



THE FINAL ADJUSTMENT BEFORE STRINGING THE WIRES



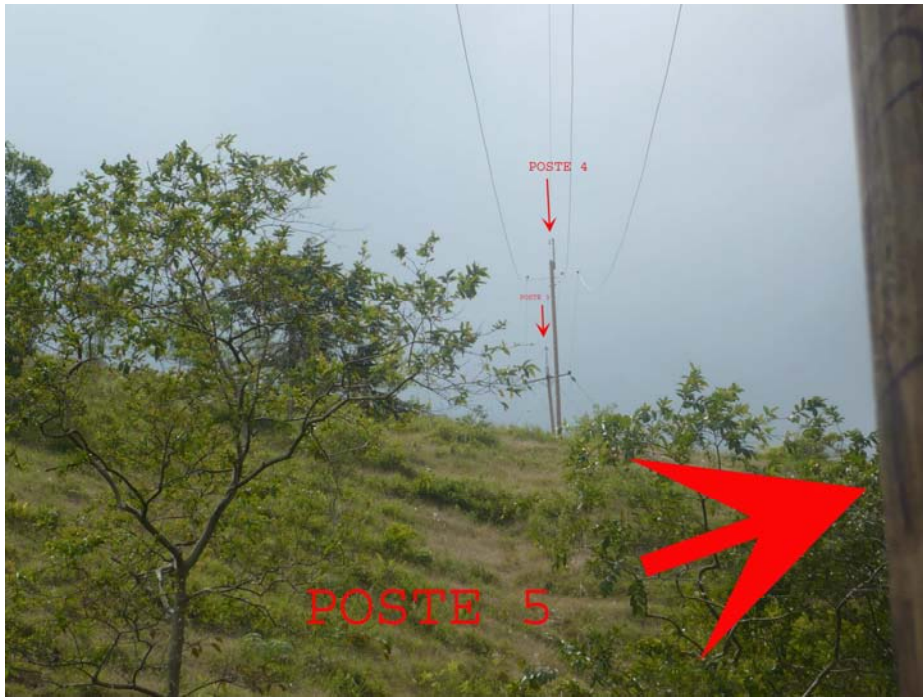
THE FINAL PRODUCT: A HIGH INTENSTIY LINE THAT CAN PROVIDE ELECTRICITY FOR A MINE AND PROCESSING PLANT.

OVERVIEW OF THE ELECTRIC LINES AFTER INSTALLATION



THE HIGH VOLTAGE TRANSMISSION LINES RUN 700 METERS AND END AT THE ENTRANCE TO THE MINE





HIGH VOLTAGE LINES RUNNING DOWN THE HILL TO THE MINE ENTRANCE