

***MONA MINAS S.A. MINE LAS PALMERAS LICENSE #4395  
SEPTEMBER 24TH -28TH***

**FOUR DAYS IN PICTURES ABOUT THE PROJECT OUTSIDE AND INSIDE THE MINE**

The outside logistic team, led by Pablo Orozco, have finished the drainage and walls and now are concentrating on replacing the plastic tarp that protects the inside of the mine from rain water that leads to cave ins. The team will be installing ribs of wood and securing the plastic in a more permanent solution to prevent wood gusts from blowing the plastic tarp off its exoskeleton.





As the tarp is pulled back 18 months of no sunlight has killed all the grass and foliage underneath. When the plastic was first installed in the spring of 2009 it was meant to be a short term solution. With the constant rain in the last 4 months making the plastic secure is now a priority. If it was feasible we would put in zinc sheets instead of plastic but the costs outweigh the benefits.



As our team above works to replace the tarp the miners inside the mine have uncovered what appears to be a massive vein front. The vein seems to be 45 cm to 50 cm wide with a length of at least 2 to 3 meters from the top of the left of the pictures the bottom right in the pictures.

## MONSTER VEIN FROM TOP TO BOTTOM OF THE TUNNEL EXPOSED

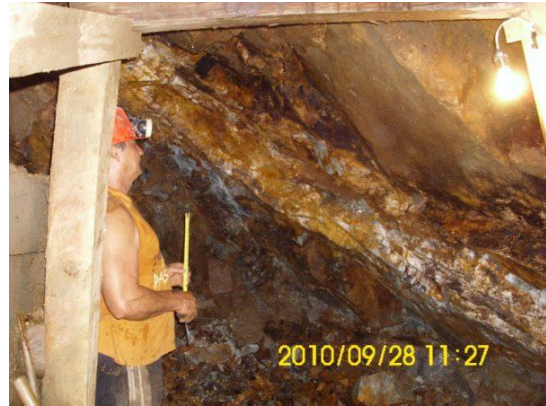
45 to 50 cm wide Gold and Silver Ore Vein has been exposed by blasting at a horizontal depth of inside the mine of 46 to 48 meters. This same vein was sampled in September two meters down where a layer had been left over by previous miners years before. One sample came back at 17.5 grams of gold per ton. The complete sampling of this same vein two meters below and 35 meters deep gave us a yield of 5850 KGs or less than six tons of ore. Gold that was recovered by cyanide processing was over 8.3 grams of AU per ton and close to 110 grams of AG per ton.

SEPT 24<sup>TH</sup> TO SEPT 28<sup>TH</sup> The vein has widened from 15 cm to 40 cm to a average width of 45 to 50 cm. The wider the vein the more ore per cubic meter is harvested.



**VEIN WIDENS TO 45 TO 50 CENTIMETERS FROM TOP TO BOTTOM OF THE TUNNEL.**





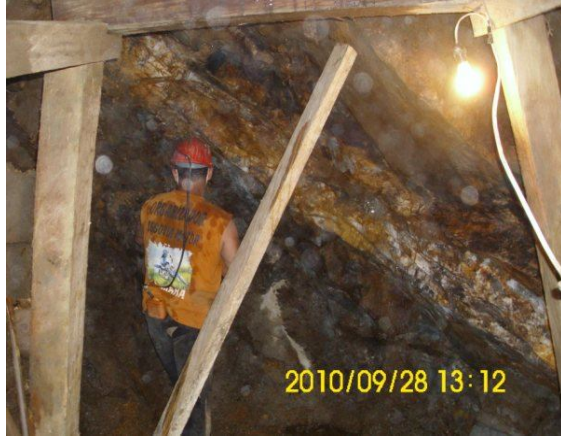
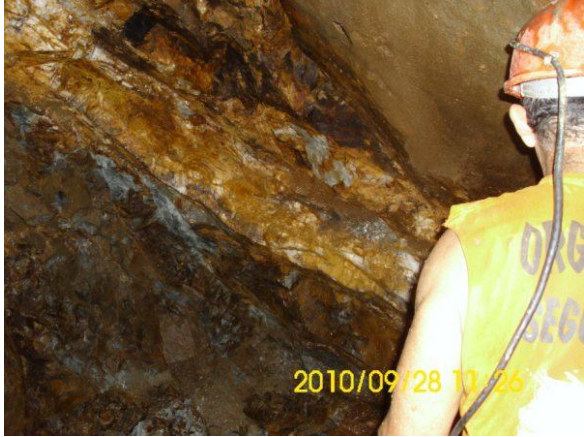
**MINE TUNNEL ON SEPTEMBER 27<sup>TH</sup> TO SEPTEMBER 28<sup>TH</sup> 2010**



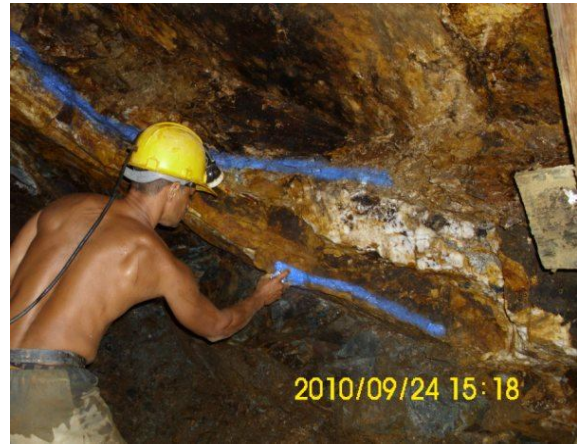
**The miners built a Virgin Mary to overlook the mine! The Vein is still getting wider as the team works.**



**The Vein is now over 45 cm in width and runs from the roof to the floor in a consistent width.**



**PRESENT VEIN WIDTH 50 cm**



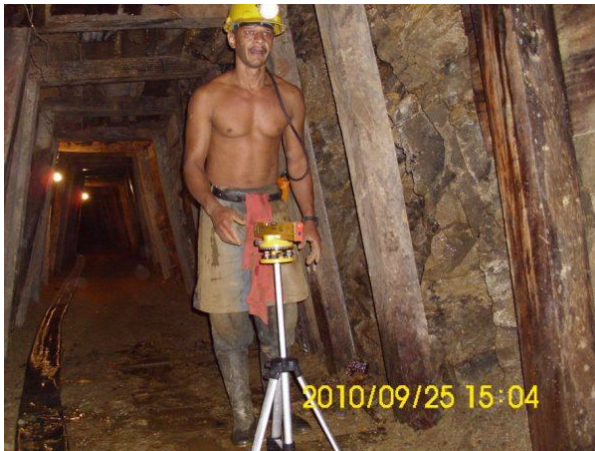
**VEIN BEGINS TO WIDEN 4 DAYS EARLIER**

**Pictured below a miner is cleaning the ore and bagging the best pieces of mineral from the vein!**





**Mona Minas S.A. Miners at work in front of the mine entrance! The laser guided level being used to keep the mine shaft floor level. Our site team leader Ramon sets the charges for the next blast!**



**MONSTER VEIN EXPOSED ABOVE RAMONS HEAD THE OXIDATION IS EVIDENT**

